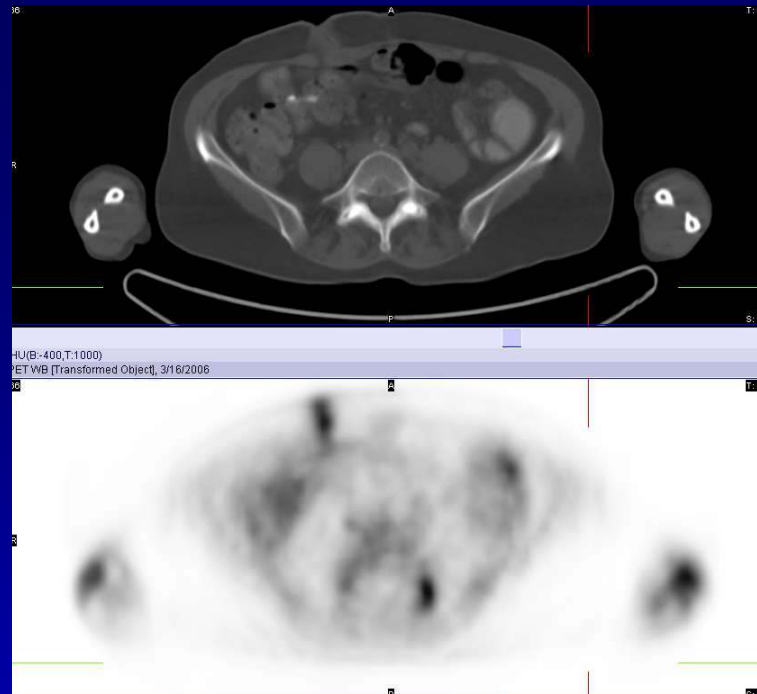
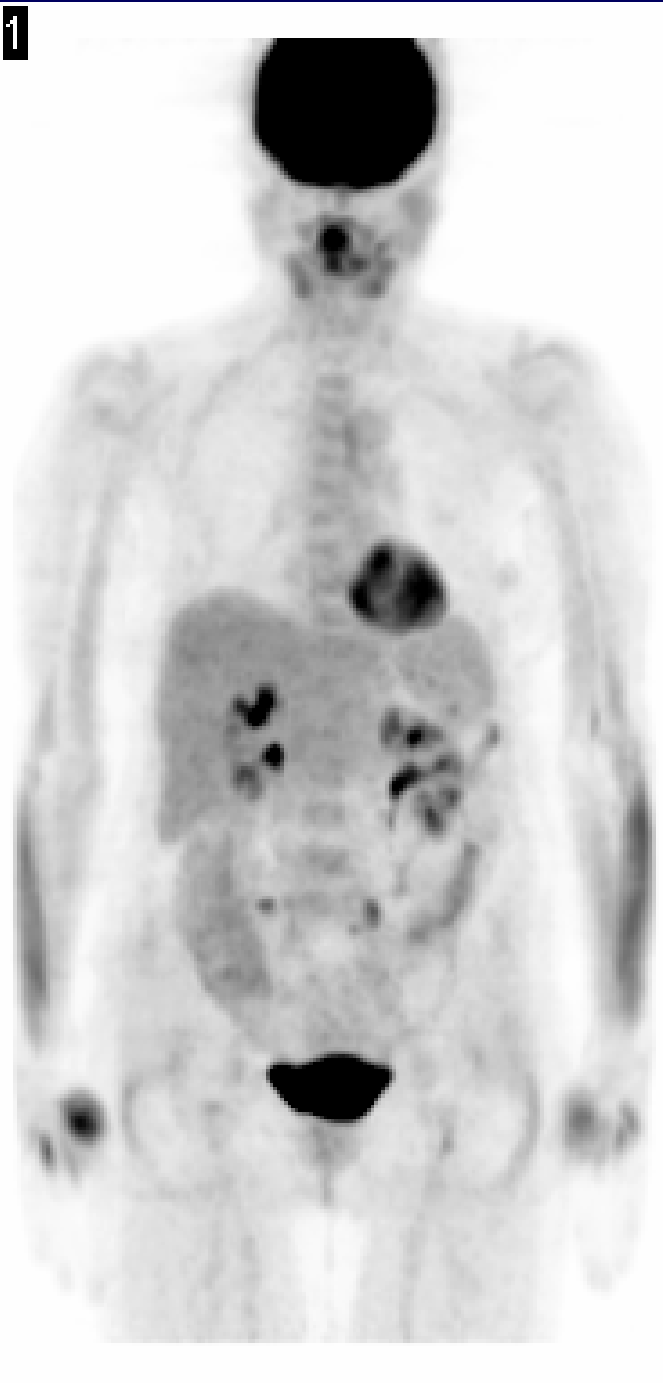


1



Case 111: Colon cancer

H/o colon cancer, s/p resection. Focal hypermetabolism is seen at the site of opening of ileostomy. It is usually from local inflammation or physiologic bowel activity or colitis and rarely from tumor recurrence or infection. Focal hypermetabolism seen in the left posterior element of L5 vertebra is likely secondary to inflammation from degenerative changes. No definite evidence of recurrent or metastatic disease is seen