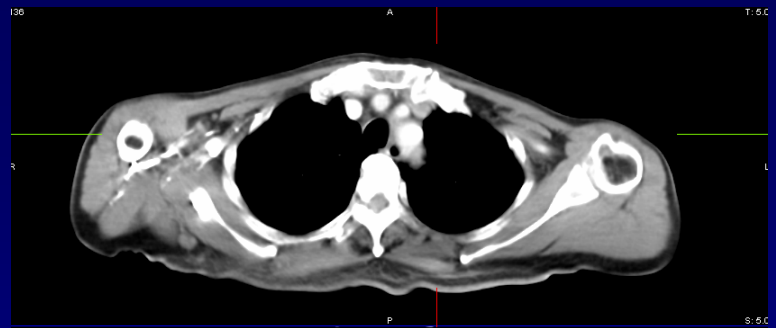
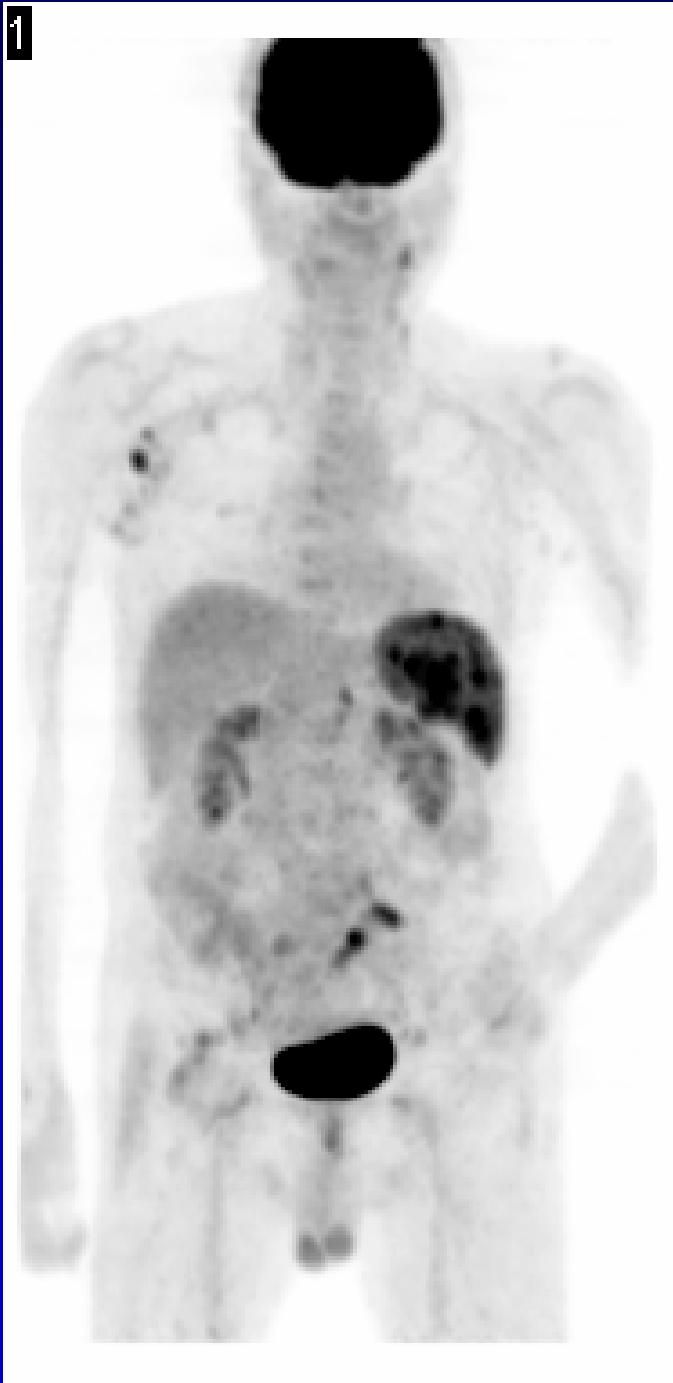
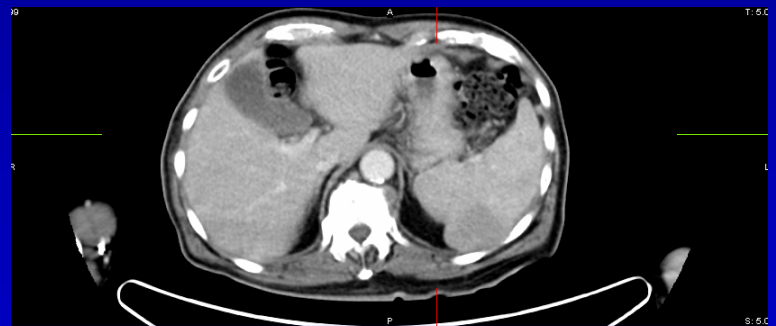
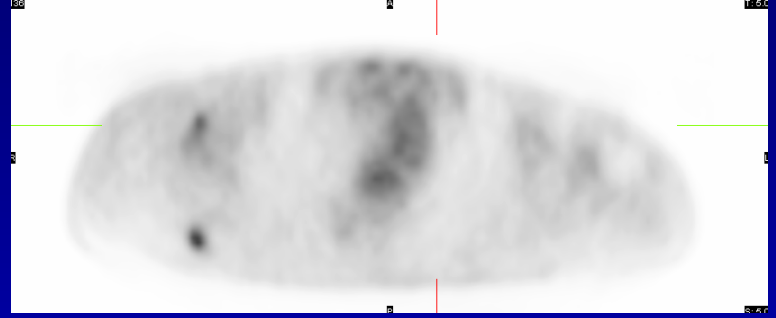


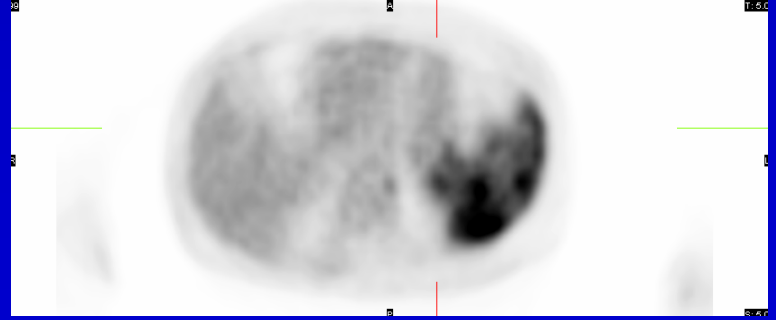
1

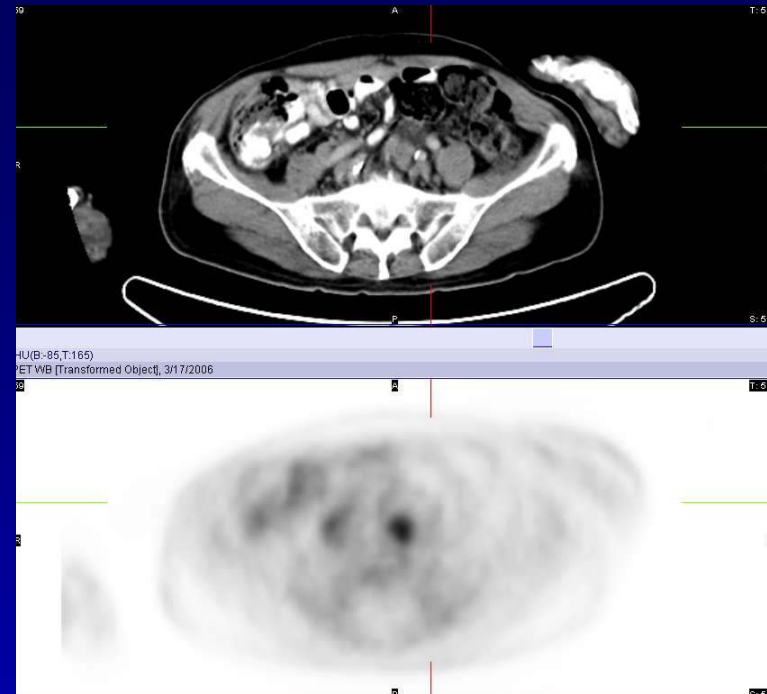
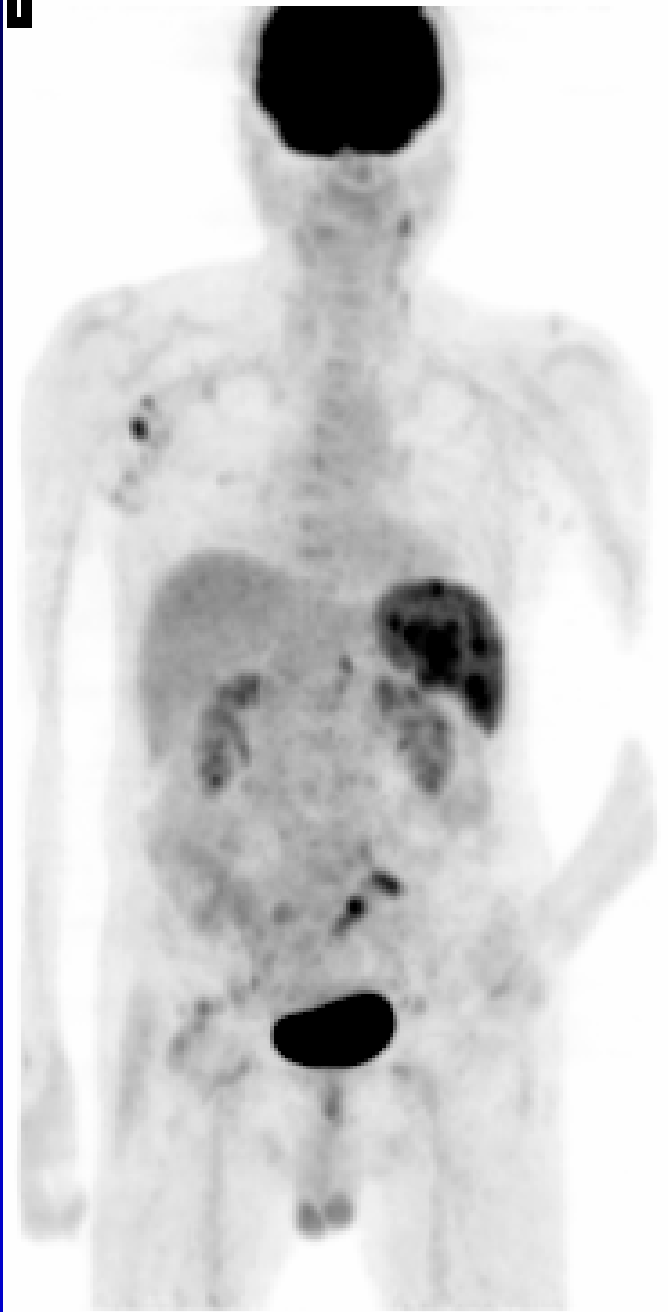


HU(B-139,T:165)
PET WB [Transformed Object], 3/17/2006



HU(B-98,T:165)
PET WB [Transformed Object], 3/17/2006



1

Case 112: Lymphoma

H/o lymphoma. Images show focal hypermetabolism in the right axillary nodes, a subcutaneous nodule in the right upper back, multiple hypodense lesions in the spleen, and nodes in the lower abdomen and pelvis. Involvement of spleen is a common finding in patients with lymphoma. Normally, activity in the spleen is less than the activity in liver. Diffuse involvement, which is more common than focal involvement, is seen as activity more intense than the liver and no lesions on the CT images. Focal involvement is seen as focal hypermetabolism and hypodense lesions on the CT.