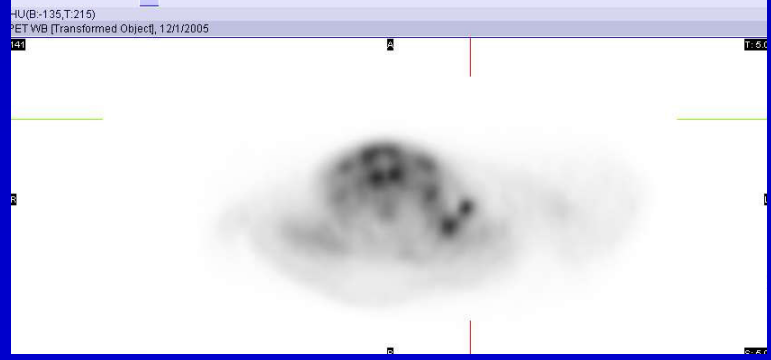
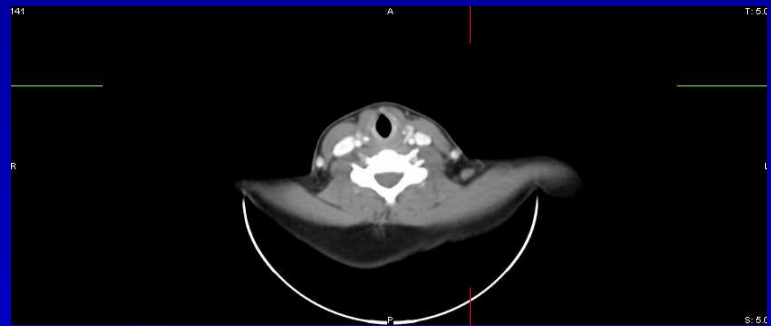
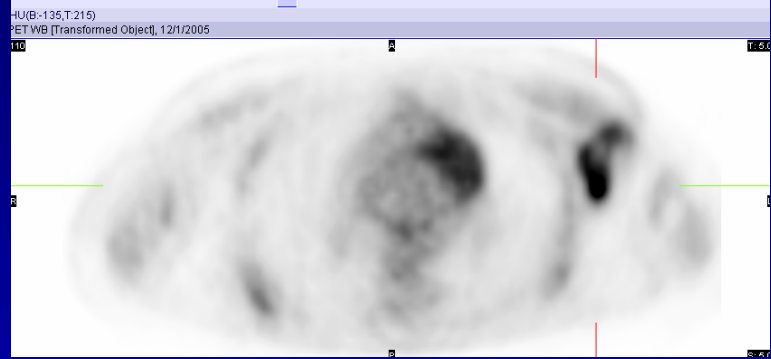
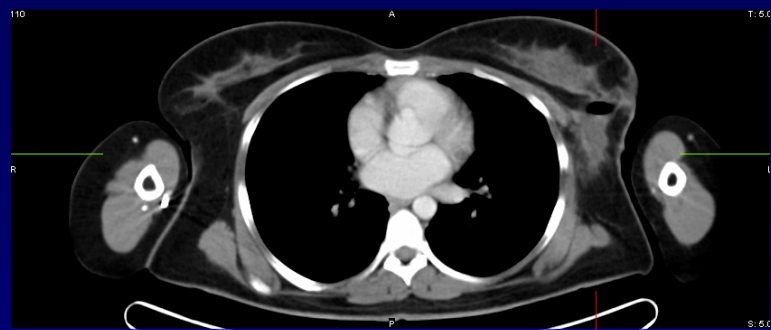
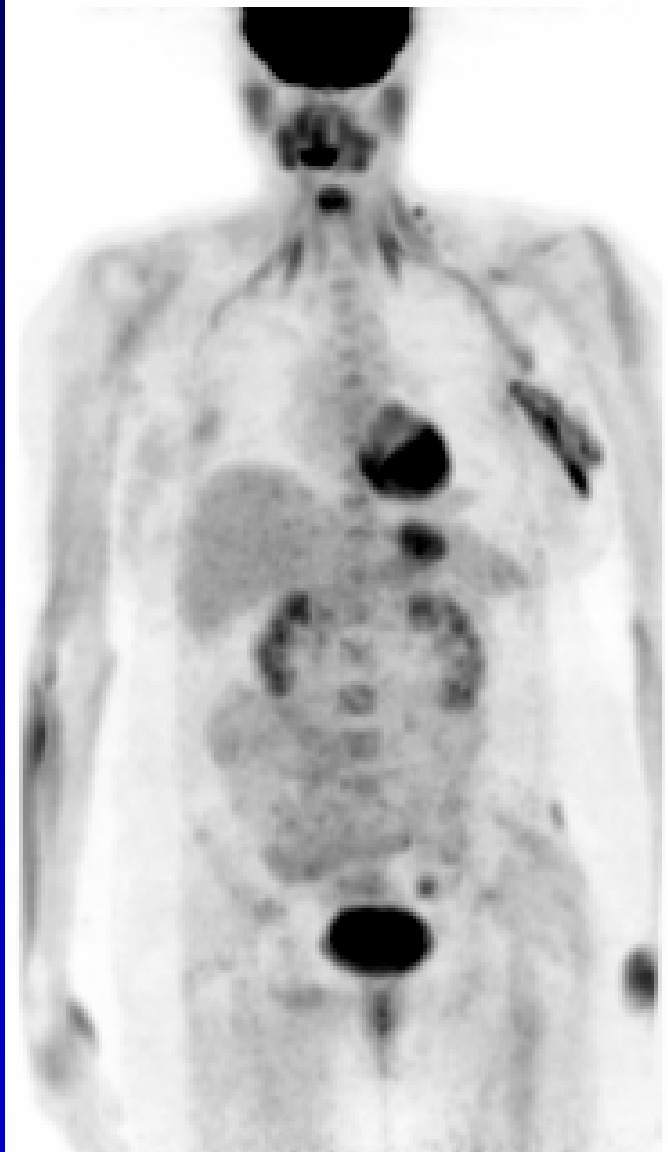
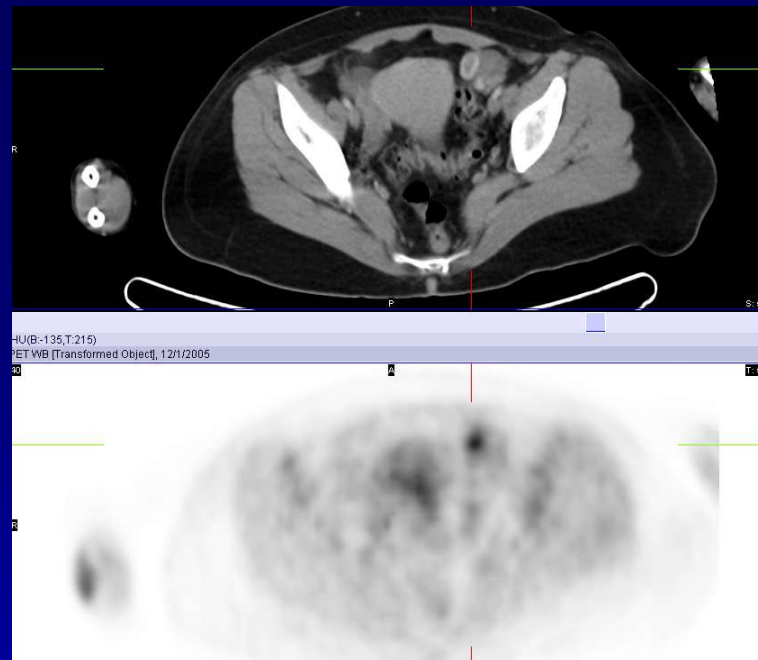


1



**1**

### Case 118

Post surgical changes and corresponding intense, likely inflammatory, FDG uptake, are seen in the left breast and the axilla, from recent surgery. Hypermetabolism seen in the left supraclavicular node is suspicious for neoplastic involvement. Physiologic FDG activity is seen in the muscles of the neck, myocardium and the stomach. Focal FDG activity seen in the left side of the pelvis corresponds to a corpus luteal cyst on the CT. Focal hypermetabolism in the adnexa is a frequent false positive finding or an FDG avid artifact in premenopausal women scanned during ovulation. This finding resolves if the scan is repeated just after menstruation.