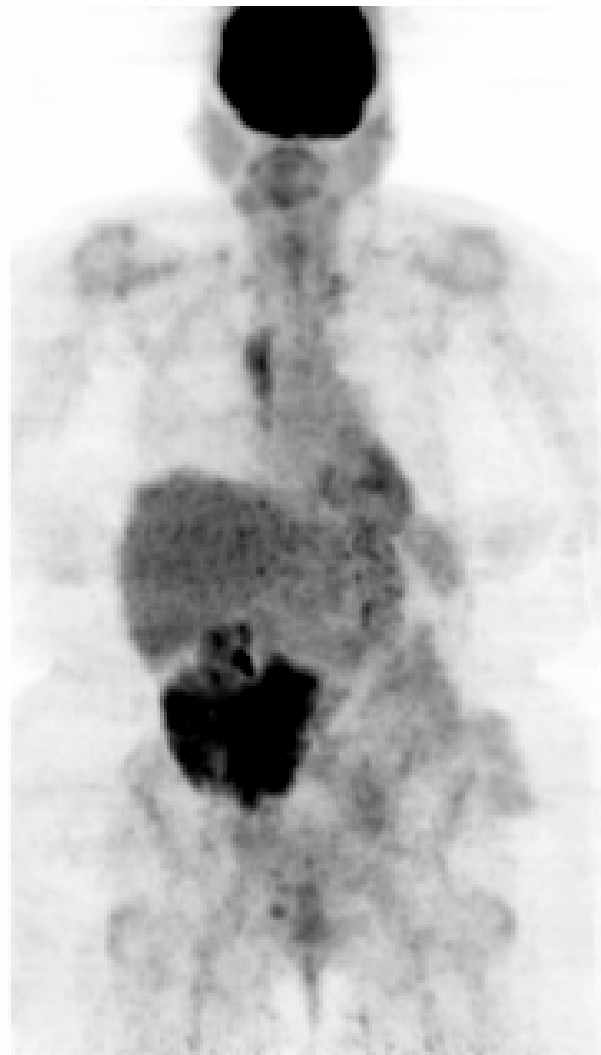


**1****1**

### Case 126

The projection image on the left is from a patient with h/o cervical cancer and pelvic exenteration surgery. The large area of hypermetabolism seen in the right side of the abdomen is from urinary diversion procedure and urine activity in the pouch.

The projection image on the right is from a patient with h/o pancreatic cancer. Stasis of radioactive urine seen in the pelvis of the hydronephrotic left kidney is from UPJ obstruction.